

*Make in India*

## Mobile: Monoblock Directional Control Valve

Series: 1P40  
Pressure : 250 bar  
Flow : 40 lpm



### Description

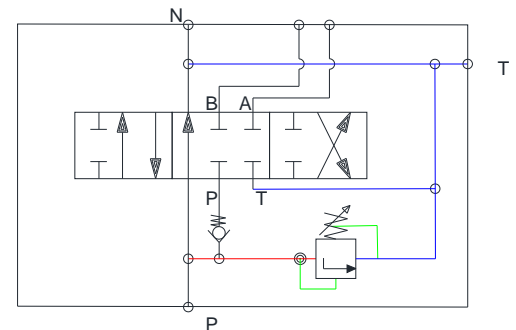
Monoblock Directional control valves (P40 Series) are specially designed for mobile applications. These are manual (lever) operated directional control valves multiple spool configurations to suit the application requirements.

Compact in design and with high grade Cast Iron design valves would have better reliability. Carefully design spool & bore profile, it would have higher high flow and pressure capability..

#### Features:

- Open Center Mobile valves
- Series and Parallel distribution
- High Pressure carryover port
- Lower Leakages
- Individual Load Check on P-Port (Optional)
- Spring center type and Detent as option also available

### Hydraulic Symbol



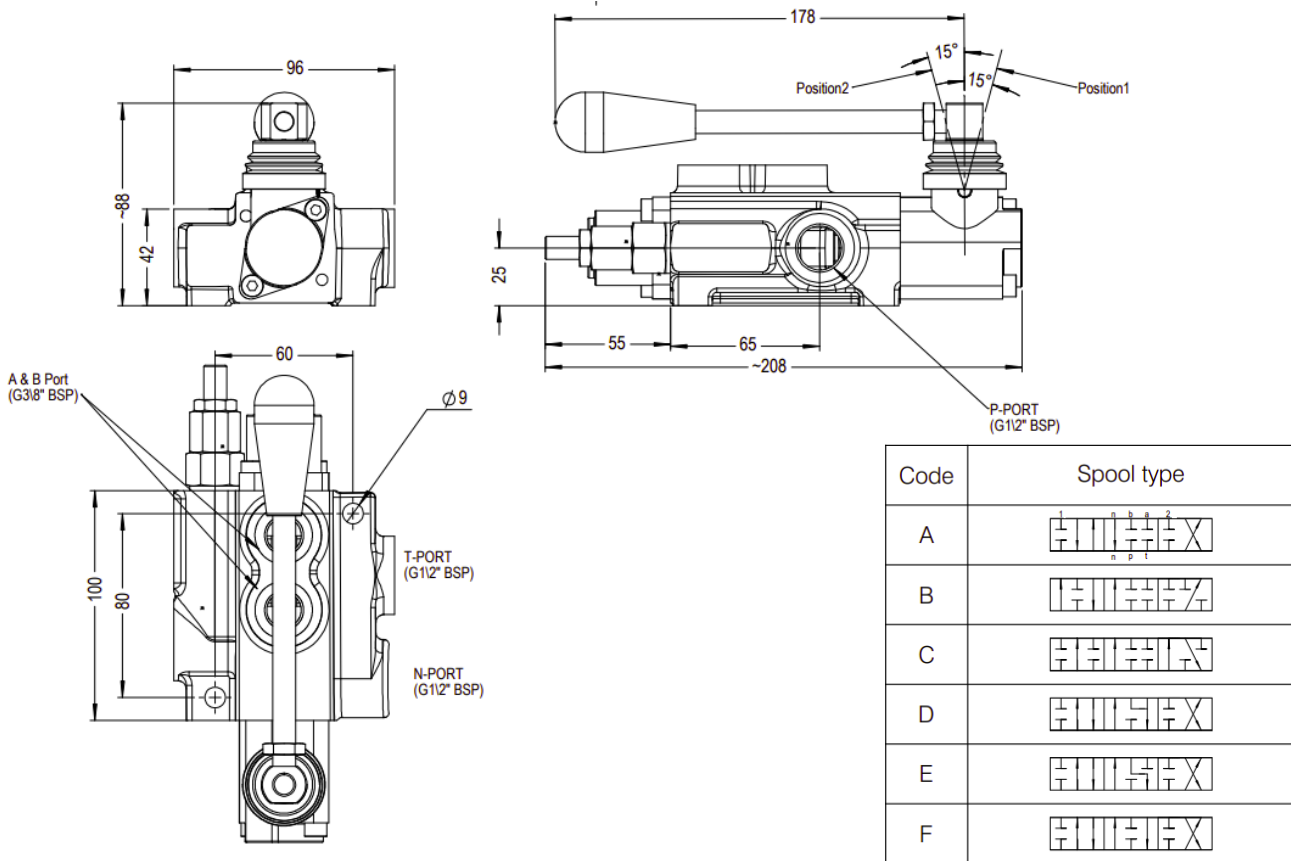
### Spool Type : 1

Technical data	
Construction	Monoblock Spool Valves
Function	Directional Control
Mounting Interface	2 bolt, factory Standard
Working Pressure	250 bar ( T-Port: 50 bar)
Rated flow	40 lpm
Internal Leakage	20 cc/min at 100bar (Typical)
Fluid Viscosity range	15 cSt to 400 cSt (20...100mm <sup>2</sup> /s recommended range)
Oil Cleanliness	Oil contamination 10 to NAS1638
Fluid temperature range	- 10 °C to +70 °C
Medium	Mineral oil based hydraulic oil

# Monoblock Directional Control Valve (1P40)



## Installation:



**Model Code: Ex 1P40 1 A 1 G KZ 01**

0	1	P40	1	A	1	G	KZ	01
1	2	3	4	5	6	7	8	9

### 1-Common Load Check

0 – Common Check @ P  
Omit if not required

### 2-Number of Spools

1 – Single Spool  
2 – Two Spool ( Refer 2P40)

### 3-Valve Series

P40 – Directional Control Valve

### 4-Way of distribution

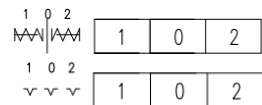
1 – Parallel Distribution

### 5-Spool Type

See Symbol (A,B,C,D,E..etc)  
*Note: A-Type spool is standard version, others are made to order*

### 6 – Spool Control

1 – Spring Center (Std)  
8 - Detented



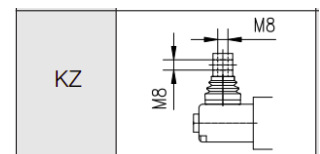
### 7 – Ports / Threads Connections

G – BSP (standard)  
M – Metric (Made to order)

Code	Ports (threads)			
	P	A; B	T	N
M	M22X1.5	M18X1.5	M22X1.5	M22X1.5
G	G1/2	G3/8	G1/2	G1/2

### 8 – General Feature

KZ –



### 9 – Design Code

01 – Design Code

### 10-Special feature

Add note