

THROTTLE CONTROL CUM CHECK VALVE MODULAR CONSTRUCTION

Modular Throttle cum Check valve

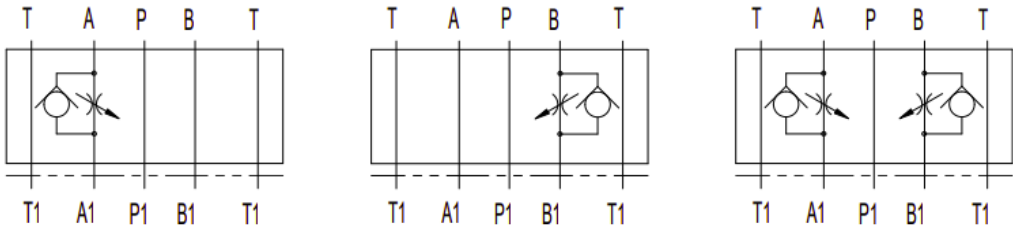
Model: MTC-**
 Pressure : 315 bar
 Flow : 35 lpm



Description

These are double throttle/check valve in sandwich plate design. They are used to limit the main or pilot flow of one or two service ports. Two symmetrically arranged throttle/check valves limit the flow in one direction and allow free-flow in the opposite direction. The throttling spool is axially adjustable via the adjustment screw or hand knob.

Valve can be used as meter-in or meter-out control. For more details refer the hydraulic symbols.

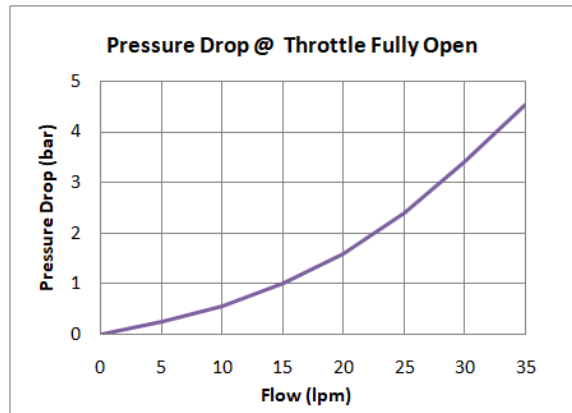
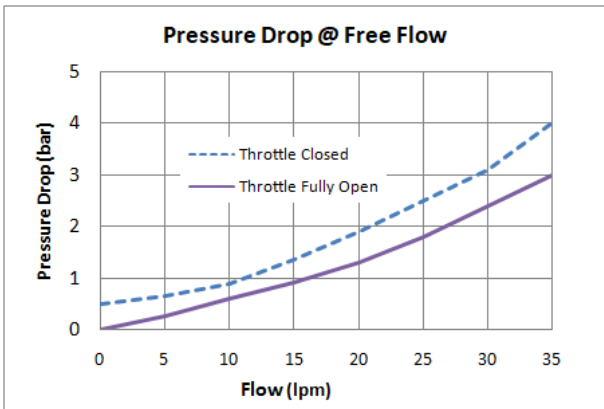


Technical data	
Construction	Modular, Spool type
Function	Throttle cum Check, meter in/out
Mounting Interface	ISO 4401-AB-03-\$-A
Working Pressure	315 bar
Rated flow	35 lpm (See Flow graphs)
Check Spring	1 bar
Fluid Viscosity range	15 cSt to 400 cSt
Fluid temperature range	- 10 °C to +70 °C
Weight	~ 1.2 kg

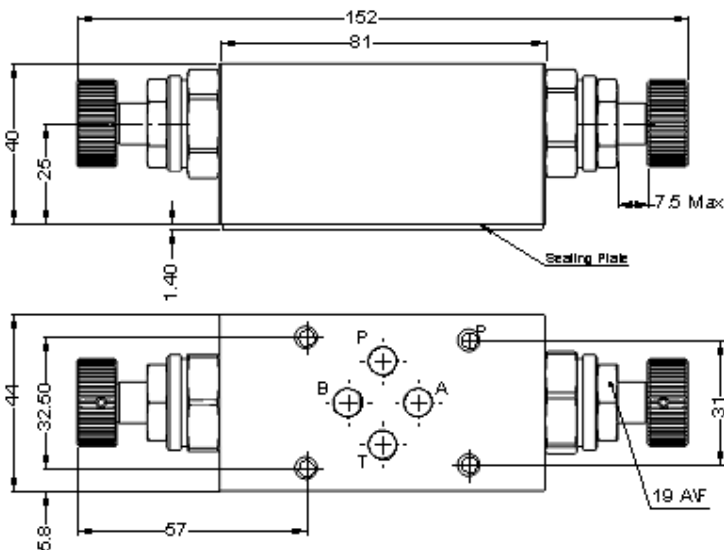
THROTTLE CONTROL CUM CHECK VALVE MODULAR CONSTRUCTION

Model	Valve Size	Throttle control on Port	Design Code
MTC	-06	AB	-01
MTC : Throttle cum Check Valve for A&B Lines	06: NG06 Size	AB: On Port A&B	01: Design Code (Standard)
		A: On A port	
		B: On B Port	

Typical Performance Characteristics



Installation Dimensions (Dimensions are in mm)



- Interface O-ring (Seal)
- Size : 9.25 I.D x 1.8 csd

Typical sectional view

