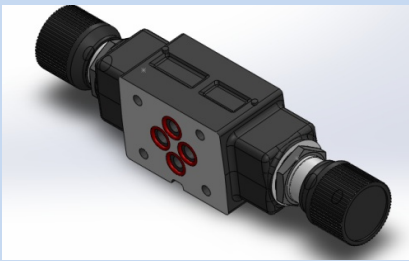


THROTTLE CONTROL CUM CHECK VALVE MODULAR CONSTRUCTION

Modular Throttle cum Check valve

Model: MSW-**
 Pressure : 250 bar
 Flow : 35 lpm



Description

These are double throttle/check valve in sandwich plate design. They are used to limit the main or pilot flow of one or two service ports. Two symmetrically arranged throttle/check valves limit the flow in one direction and allow free-flow in the opposite direction. The throttling spool is axially adjustable via the adjustment screw or hand knob.

Interface conforming to ISO 4401-AB-03-4-A

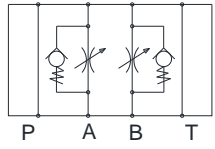
In order to change the velocity of an actuator (main fluid flow), the double throttle/check valve is installed between the directional valve and the sub-plate.

Valve can be used as meter-in or meter-out control. For more details refer the hydraulic symbols.

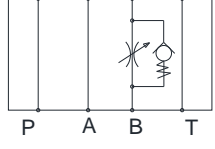
Technical data	
Construction	Modular, Spool type
Function	Throttle cum Check, meter in/out
Mounting Interface	ISO 4401-AB-03-\$-A
Working Pressure	250 bar
Rated flow	35 lpm (See Flow graphs)
Check Spring	1 bar
Fluid Viscosity range	15 cSt to 400 cSt
Fluid temperature range	- 10 °C to +70 °C
Weight	~ 1.2 kg

Meter-Out

MSW-**-X



MSB-**-X

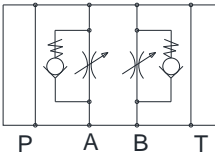


MSA-**-X

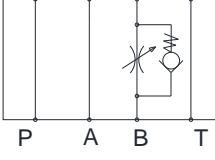


Meter-In

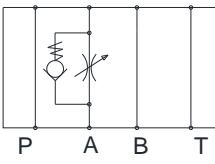
MSW-**-Y



MSB-**-Y



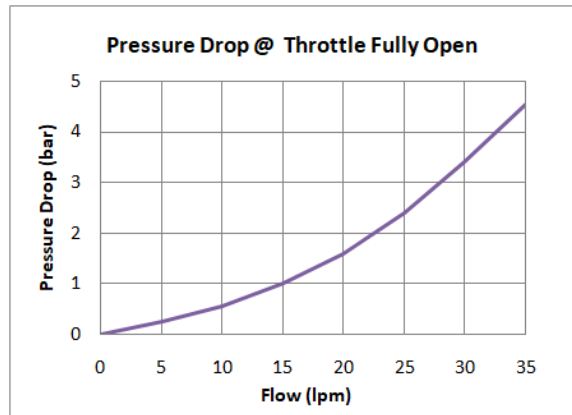
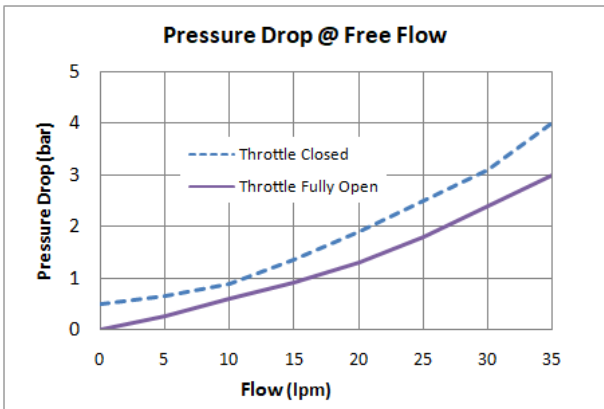
MSA-**-Y



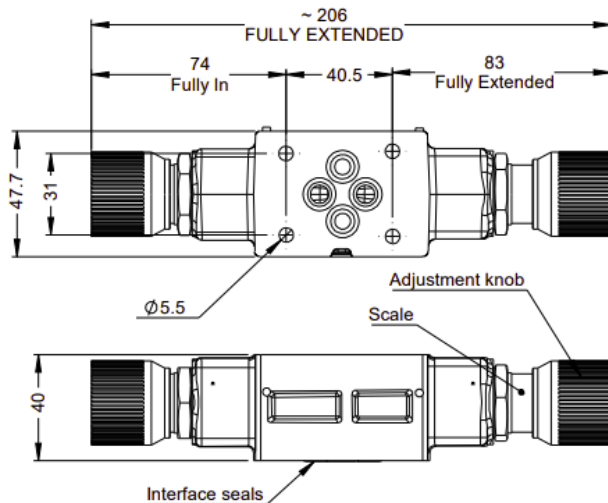
THROTTLE CONTROL CUM CHECK VALVE MODULAR CONSTRUCTION

Model	Valve Size	Direction of Flow A Line	Direction of Flow B Line	Design Code
MSW	-01	X	Y	-10
MSW : Throttle cum Check Valve for A&B Lines	01: NG06 Size	X- Meter-out	..	10
MSB : Throttle cum Check valve for B Lines		Y- Meter-in	..	
MSA : Throttle cum Check valve for A Lines		..	X- Meter-out	
		..	Y- Meter-in	
		X- Meter-out (Standard)		
Y- Meter-in (Standard)				

Typical Performance Characteristics



Installation Dimensions (Dimensions are in mm)



- Interface O-ring (Seal)
- Size : 9.25 I.D x 1.8 csd