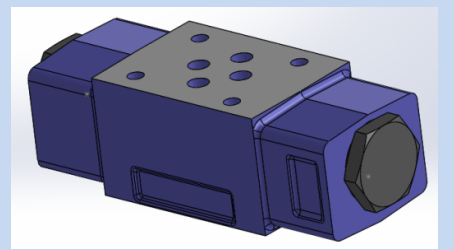


PILOT OPERATED CHECK VALVE MODULAR CONSTRUCTION

Modular Pilot Operated Check valve

Model: MPW-**
 Pressure : 250 bar
 Flow : 35 lpm

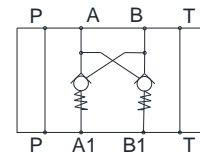


Description

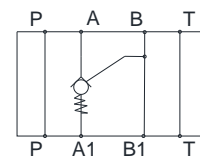
These modular (or stackable) valves are available with the pilot operated check valve facility. They are used for the leak-free closure of one or two service ports, even for long periods. Free flow occurs through check poppet and the opposite direction is blocked. To unload the blocked service port, minimum pilot pressure to be supplied on opposite side, which to be estimated based on pilot ratio.

Interface conforming to ISO 4401-AB-03-4-A

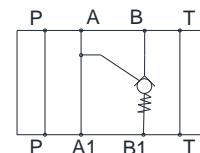
To ensure proper closure of both valve poppets, both user connections should be unloaded when the control valve is in the neutral by connecting with the return line.



MPW- **

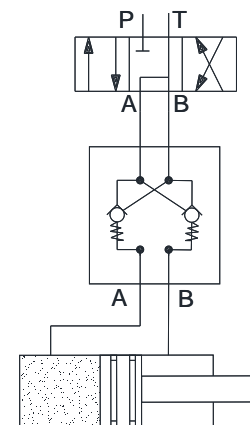


MPA **



MPB- **

Technical data	
Construction	Modular Seated valves
Function	Check with internally piloted
Mounting Interface	ISO 4401-AB-03-\$-A
Working Pressure	250 bar
Rated flow	35 lpm (See Flow graphs)
Area ratio (Seat to Piston)	1 : 2.3
Fluid Viscosity range	15 cSt to 400 cSt
Fluid temperature range	- 10 °C to +70 °C
Weight	~ 1.2 kg



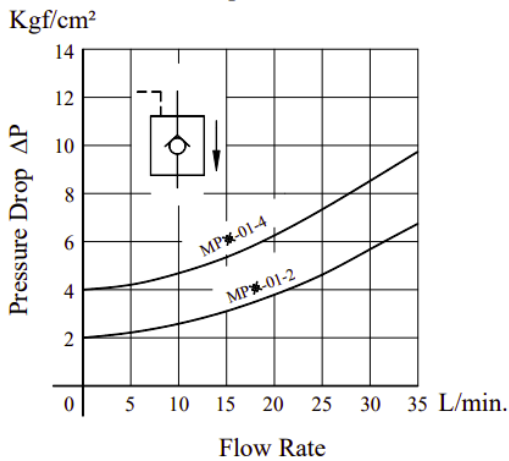
Typical application circuit

PILOT OPERATED CHECK VALVE MODULAR CONSTRUCTION

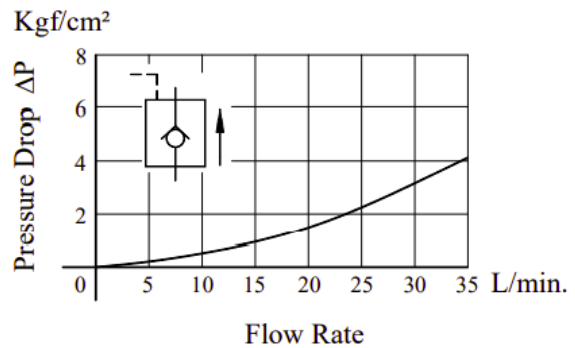
Model	Valve Size	Cracking Pressure (Bar)	Design Code
MPW	-01	-2	-10
MPW : Pilot Check Valve for A&B Lines	01: NG06 Size	2: 2 bar 4: 4 bar	10- Standard
MPB : Pilot Check Valve for B Lines			
MPA : Pilot Check Valve for A Lines			

Typical Performance Characteristics

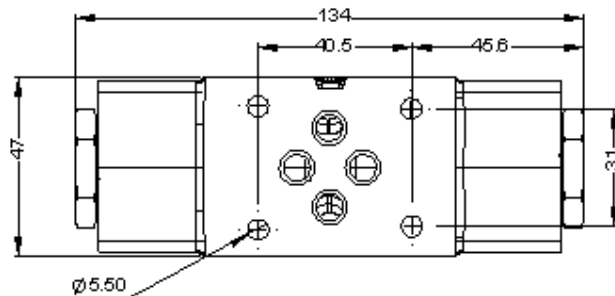
Free Flow Pressure Drop



Reverse flow Pressure Drop (Piloted Condition)



Installation Dimensions (Dimensions are in mm)



Interface O-ring (Seal)
• Size : 9.25 x 1.8 csd

