

## Type IGP1, 2, 3

High pressure Internal Gear Pump

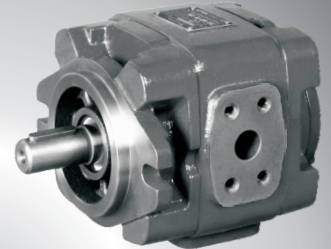
IGP1 - cc/rev - 8 . . . 20

IGP2 - cc/rev - 25 . . . 63

IGP3 - cc/rev - 80 . . . 160

Maximum operating pressure 300 bar

Single and double pump



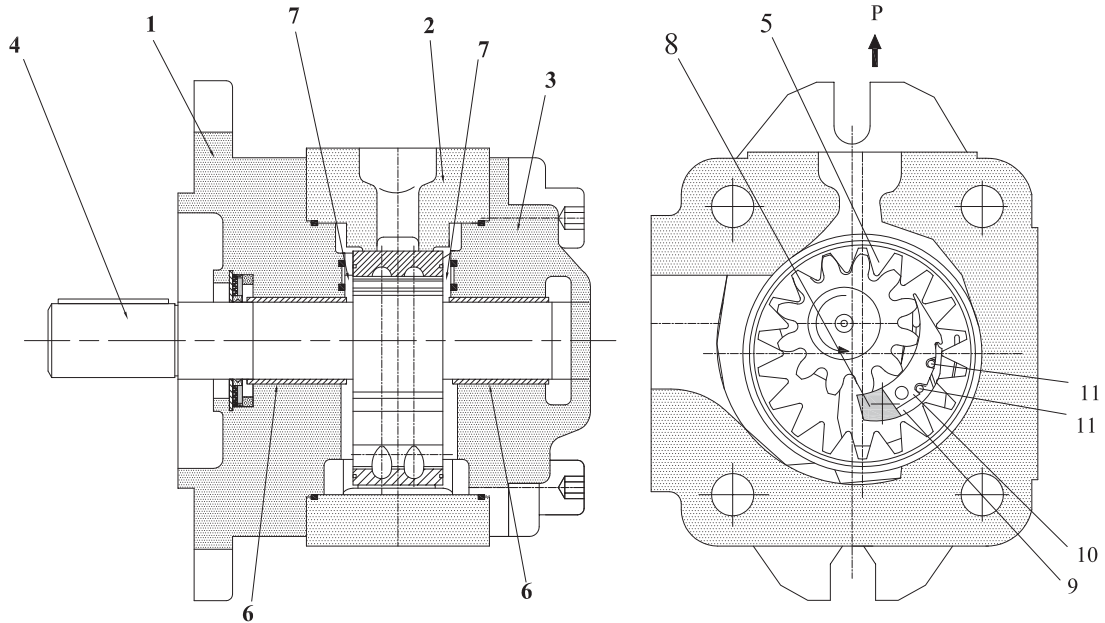
### Features

- Low pulsation of oil flow
- Fixed displacement
- Low operating noise
- Due to sealing gap compensation high efficiency at low speed and viscosity
- Wide speed ranges, can operate up to 3000r/min
- Peak pressure up to 350 bar
- Options for double pumps

### Ordering details

Series		IGP	2	-40	-01T/	R	-V	P	C	Mounting Flange	
Internal gear Pump   IGP										SAE 2 - hole mounting Flange   C	
Frame Sizes.										Shaft versions	
8, 10, 13, 16, 20	1									Parallel   P	
25, 32, 40, 50, 63	2									SAE - Spline Shaft   S	
80, 100, 125, 160	3									FKM Seals   V	
Flow cc/rev										Direction of rotation	
FS-1										(views on Shaft and clock wise)   R	
8   10   13   16   20											
FS-2											
25   32   40   50   63											
FS-3											
80   100   125   160											
		Size	cc/rev							Series	
		8	8.0							01T	
		10	10.0								
		13	13.3								
		16	16.0								
		20	20.0								
		25	25.3								
		32	32.7								
		40	40.1								
		50	50.7								
		63	63.7								
		80	81.4								
		100	100.2								
		125	125.3								
		160	162.8								

Section / function

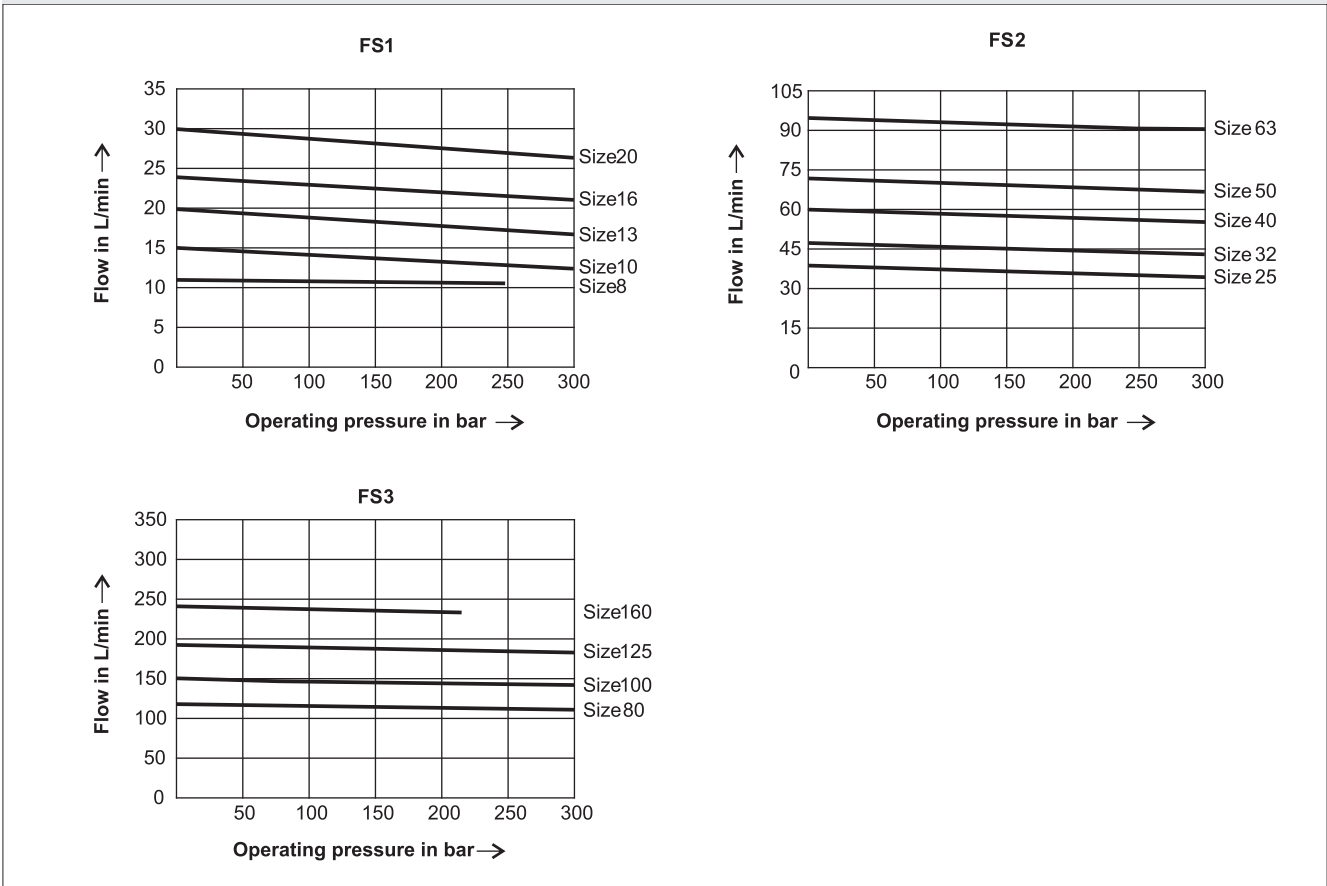


1. Front mounting flange    2. Gear housing    3. Blanking rear cover    4. Shaft  
 5. Hollow Gear    6. Plain Bearing    7. Axial Disc    8. Stop Pin    9. Segment    10. Segment carrier    11. Sealing rolls

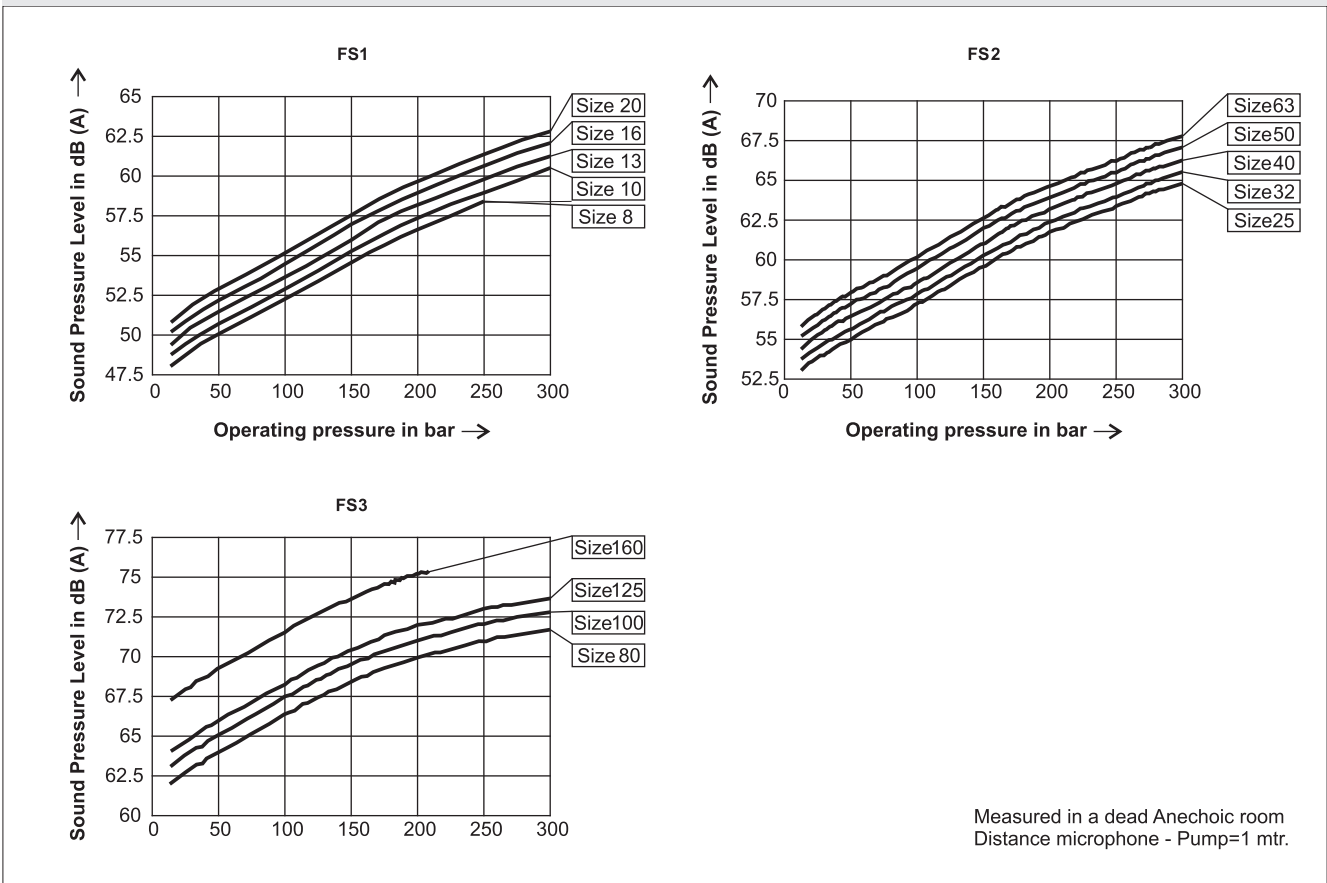
Technical data

Series Frame Size	Flow code	cc/rev	Operating Pressure Bar		Rotation/speed range		Weight
			Continuos	Interminent	r/max	r/min	
IGP1	8	8.0	250	300	3000	600	4.4
	10	10.0					4.6
	13	13.3					4.9
	16	16.0					5.2
	20	20.0					5.6
IGP2	25	25.3	315		3000	200	14.5
	32	32.7					15
	40	40.1					16
	50	50.7					17
	63	63.7					18.5
IGP3	80	81.4	210	260			43.5
	100	100.2					45.5
	125	125.3					48
	160	162.8					52

**Characteristic curve - average values for frame size 1,2 & 3 (measured at n = 1450 rpm, v = 46 mm<sup>2</sup>/s, temp=50°C)**

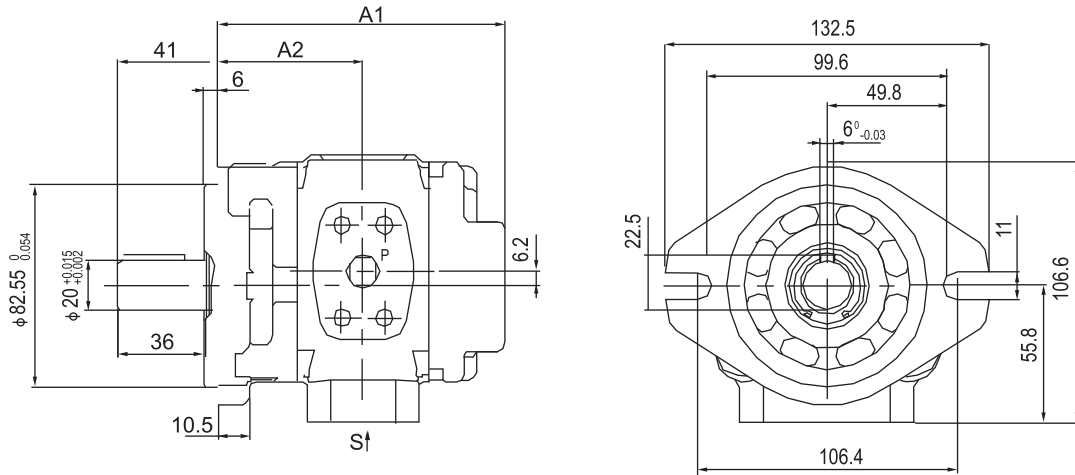


**Sound Pressure Level - average values for frame size 1,2 & 3 (measured at n = 1450 rpm, v = 46 mm<sup>2</sup>/s, temp = 50°C, distance = 1mtr)**

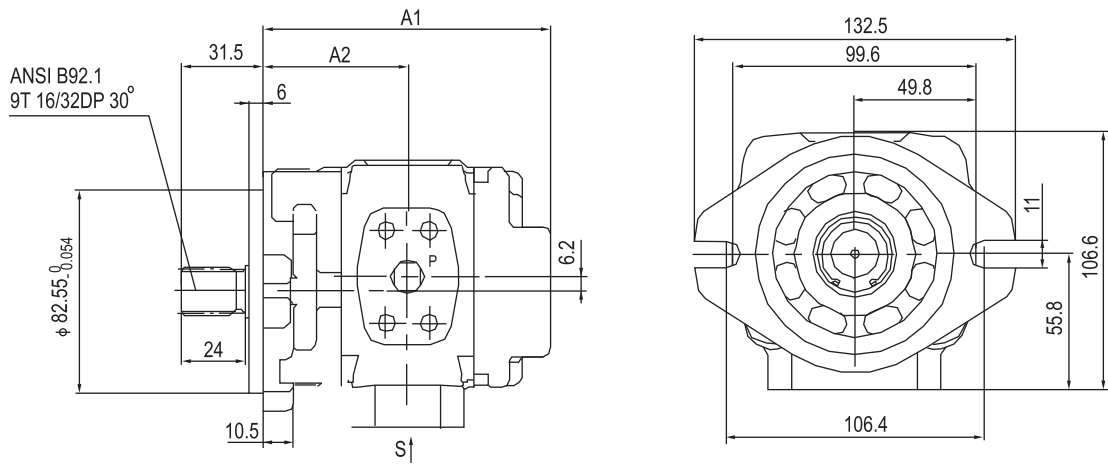


**Unit Dimensions frame size- FS 1**

**IGP1-\*\*-01T/R-VPC**

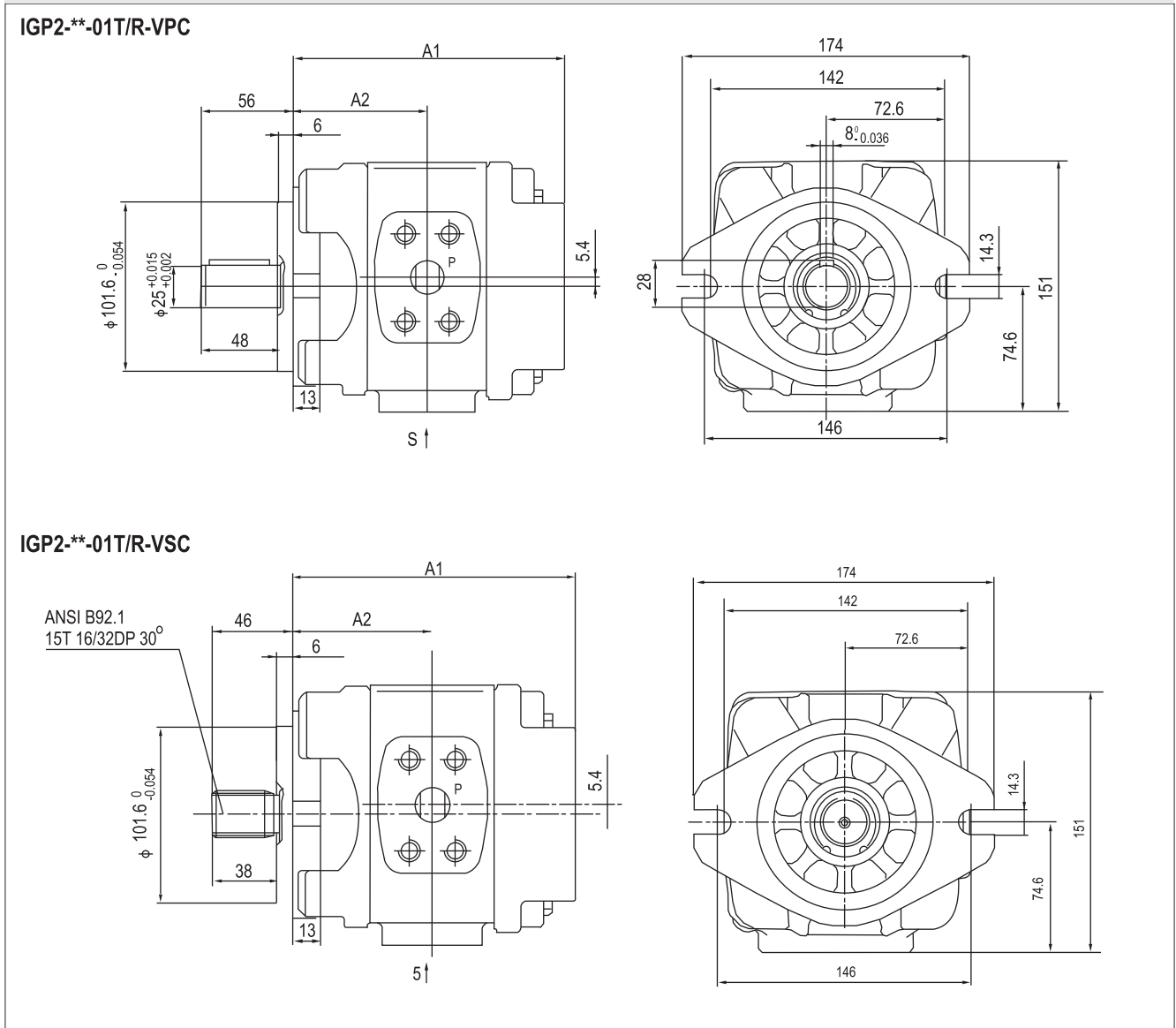


**IGP1-\*\*-01T/R-VSC**



Description		Dimensions			
Code parallel shaft	Code spline shaft	A1	A2	S	P
IGP1-8-01T/R-VPC	IGP1-8-01T/R-VSC	107	54	$\phi 19$	$\phi 13$
IGP1-10-01T/R-VPC	IGP1-10-01T/R-VSC	111	56		
IGP1-13-01T/R-VPC	IGP1-13-01T/R-VSC	117.5	59.25		
IGP1-16-01T/R-VPC	IGP1-16-01T/R-VSC	123	62	$\phi 26$	$\phi 18$
IGP1-20-01T/R-VPC	IGP1-20-01T/R-VSC	131	66		

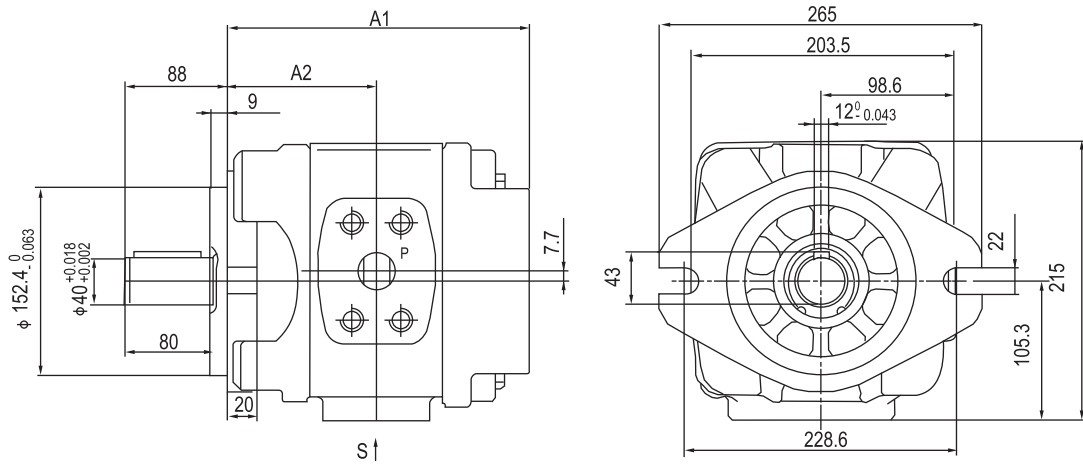
**Unit Dimensions frame size- FS 2**



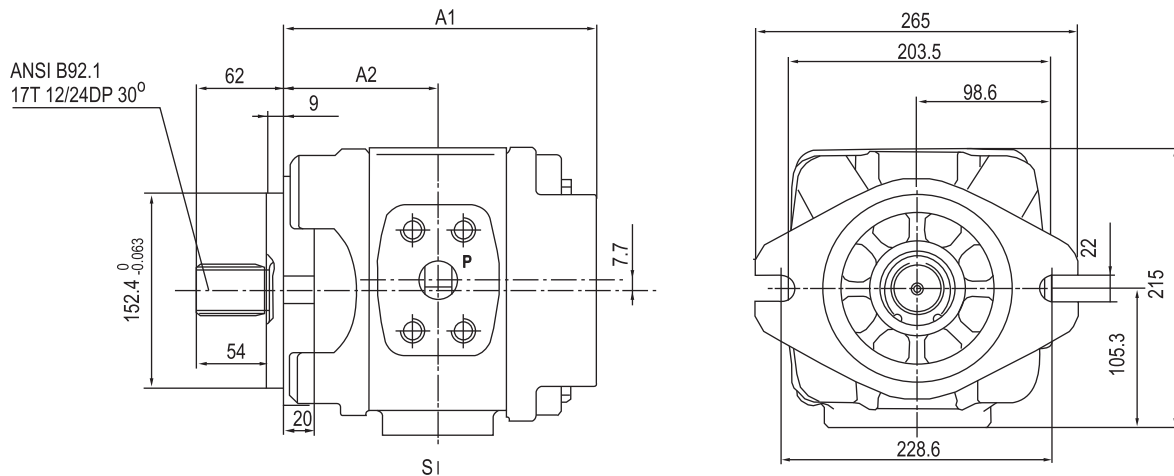
Description		Dimensions			
Code parallel shaft	Code spline shaft	A1	A2	S	P
IGP2-25-01T/R-VPC	IGP2-25-01T/R-VSC	139	73	$\phi 32$	$\phi 18$
IGP2-32-01T/R-VPC	IGP2-32-01T/R-VSC	146	76.5		
IGP2-40-01T/R-VPC	IGP2-40-01T/R-VSC	153	80		
IGP2-50-01T/R-VPC	IGP2-50-01T/R-VSC	163	85	$\phi 20$	
IGP2-63-01T/R-VPC	IGP2-63-01T/R-VSC	177	92		

**Unit Dimensions frame size- FS 3**

**IGP3-\*\*-01T/R-VPC**



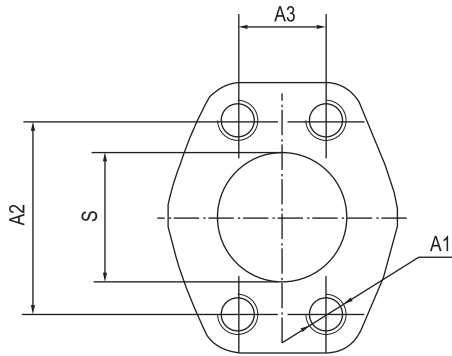
**IGP3-\*\*-01T/R-VSC**



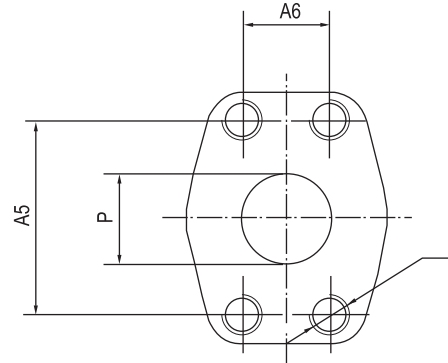
Description		Dimensions			
Code parallel shaft	Code spline shaft	A1	A2	S	P
IGP3-80-01T/R-VPC	IGP3-80-01T/R-VSC	204	109.5	$\phi 51$	$\phi 32$
IGP3-100-01T/R-VPC	IGP3-100-01T/R-VSC	213	114		
IGP3-125-01T/R-VPC	IGP3-125-01T/R-VSC	225	120	$\phi 63.5$	$\phi 38$
IGP3-160-01T/R-VPC	IGP3-160-01T/R-VSC	243	129	$\phi 76$	

**Ports Dimensions for- FS 1,2,3**

Port Suction 'S'



Pressure Port 'P'



**Ports details**

Series	cc/rev	S	A1	A2	A3	P	A4	A5	A6									
IGP1	8	φ 19	M10 deep 15	47 . 6	22 . 2	φ 13	M8 deep 13	38 . 1	17 . 5									
	10			52 . 4	26 . 2													
	13			58 . 7	30 . 2													
	16			58 . 7	30 . 2													
IGP2	20	φ 26	M10 deep 17	58 . 7	30 . 2	φ 18	M10 deep 15	47 . 6	22 . 2									
	25	φ 32				M10 deep 17	58 . 7	30 . 2	φ 18	M10 deep 17	47 . 6	22 . 2						
									40				φ 20	52 . 4	26 . 2			
																50	52 . 4	26 . 2
IGP3	80	φ 50	M12 deep 20	77 . 8	42 . 9	φ 32	M12 deep 20	69 . 9	35 . 7									
	100																	
	125	φ 63 . 5	M16 deep 25	88 . 9	50 . 8	φ 38	M16 deep 25	79 . 4	36 . 5									
	160	φ 76		106 . 4	61 . 9													

