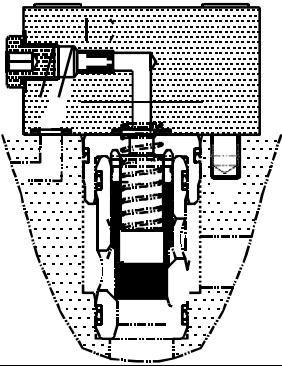
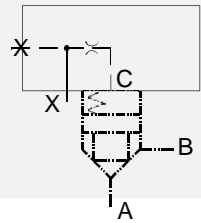


Standard Cover - CVC

Model: CVC-**- X
 Pressure : 420 bar

Hydraulic symbol

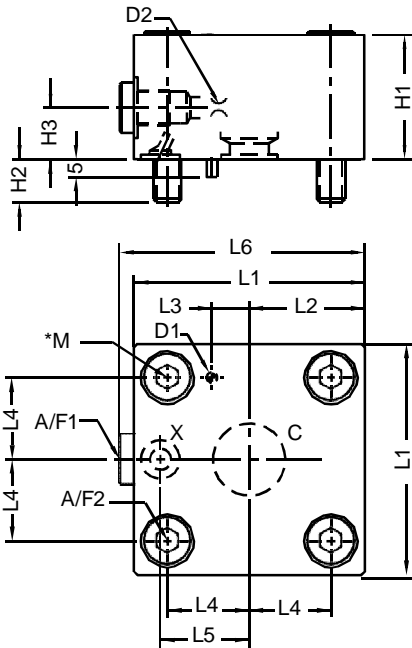


Description

The covers **CVC*X** are designed to provide oil passage to their control port **C** via **X** port provided on the cover to control the opening and closing operation of the cartridge valve.

The passage has an orifice screwed into it, for influencing the rate of opening and closing of the poppet of the cartridge valve, there by reducing / eliminating shocks in the main circuit oil flow. The threaded port on the cover can also be used for diagnostic purpose or for parallel supply of oil to some other function. This is particularly useful for the onsite modifications to the circuit.

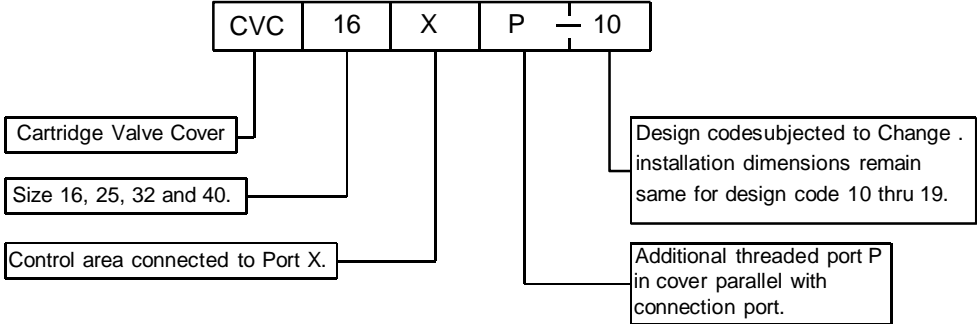
Installation Details : Dimensions in mm.



Note:

Mounting interface for cover as per ISO 7368, for dimensional details and engineering data refer Cartridge valve data sheet D03426.

* Cover fixing S.H.C Screws are OUT OF SCOPE OF SUPPLY.



Size	Mass Kg. Appro.	L1	L2	L3	L4	L5	L6	D1	D2	H1	H2	H3	A/F1	A/F2	*M. 4 nos. Cover fixing S.H.C. Screw (Class 12.9)	Tightening Torque.
16	1.0	65	32.5	10.5	23	25	69.5	3	2	35	12	20	5	6	M8 x 50 Long	39 Nm
25	2.1	85	42.5	16	29	33	89	5	2	40	18	25	6	10	M12 x 45 Long	135 Nm
32	4.0	102	51	17	35	41	106	5	2	50	24	30	6	14	M16 x 55 Long	330 Nm
40	7.5	125	62.5	23	42.5	50	130	5	2	60	30	30	10	17	M20 x 70 Long	650 Nm