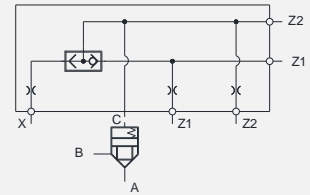


## Shuttle Cover -

Model: CVC-\*\*-S  
Pressure : 420 bar

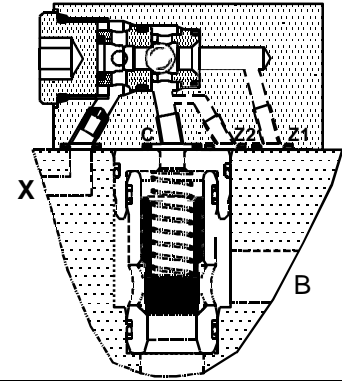
### Hydraulic symbol



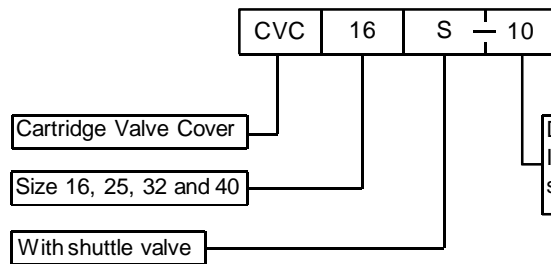
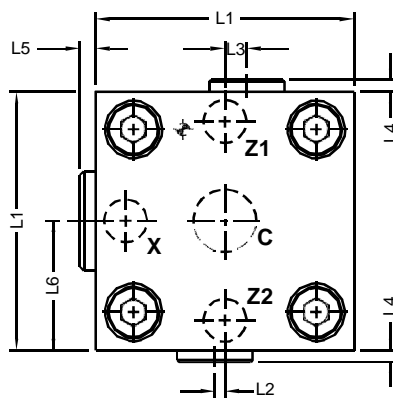
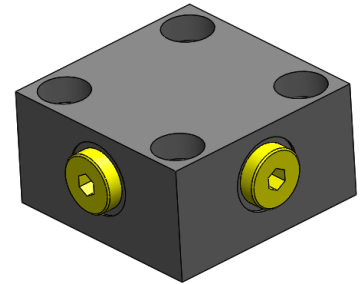
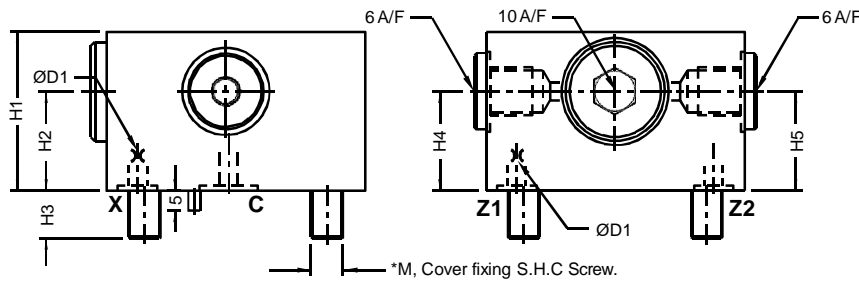
### Description

The Covers **CVC\*S** are designed to connect port C of the Cartridge to one of the two pressure sources, brought to its port X and port Z1. Automatic selection of higher source pressure and isolation of these pressures from one another is done by the built in Shuttle valve in the cover.

The resultant pressure source acting on the port C is also available at port Z2 provided on the cover.



### Installation Details : Dimensions in mm.



Design code subjected to Change.  
Installation dimensions remain same for design code 10 thru 19.

Size	Mass Kg. approx	L1	L2	L3	L4	L5	L6	L7	L8	L9	L10	ØD1	ØD2	ØD3 max	ØD4	t1	t2	H1	H2	H3	H4	H5	*M. 4 nos. Cover fixing S.H.C. Screw (Class 12.9)	Tightening Torque.
16	1.5	65	2.5	5.5	3	4	32.5	23	25	23	10.5	1	4	4	M8	14	10	35	25	12	25	25	M8 x 40 Long	39 Nm
25	2.5	85	6.0	6.0	3	2	42.5	29	33	29	16	1	6	6	M12	20	10	40	25	18	25	25	M12 x 45 Long	135 Nm
32	4.3	102	8.0	0.0	4	4	51	35	41	35	17	1.2	6	8	M16	26	10	50	30	24	30	25	M16 x 55 Long	330 Nm
40	7.5	125	0.0	0.0	4	0	62.5	42.5	50	42.5	23	1.2	6	10	M20	33	10	60	30	30	30	30	M20 x 70 Long	650 Nm